



**December**

17 End of Term 2

18 Inset Day

**January**

04 Inset Day

05 Start of Term 3 for the children

26 Swallows Day visit to Mill on the Brue (email sent 11/11)

28 Kingfishers Day visit to Mill on the Brue (email sent 11/11)

**Don't forget all the dates are on the website.**

**School News**

**As this is the last newsletter before Christmas all the staff would like to wish everyone a very Merry Christmas and a Happy New Year.**

**Help to minimise the Risk**

Please help us to minimise the risk to our school from Covid-19 by;

- Wearing a facemask that covers your nose and mouth when entering the school site including the school reception
- Only one adult per family coming onto site to drop off or collect children
- Dropping off and collecting your child as quickly as possible
- Keeping your child with you whilst waiting for other children
- Informing the school when your child is absent and the reason for the absence
- Please do not let the children play on the play equipment after school. (Children should not be playing on the equipment anyway; we have also opened the play equipment to designated classes on a weekly basis and need to avoid cross contamination).

**Hérons Class**

This term Mrs Wake has been sharing Herons Class with Mrs Russell as Mrs Tucker has been on sick leave. Mrs Wake is leaving us at the end of this term and we would like to thank her for all her help and support in Herons Class.

**Inset Day Friday 18<sup>th</sup> December**

Friday 18<sup>th</sup> December is an extra Inset Day if you have ordered a school dinner for your child on that day please remember to cancel your order.

**Important C19 update: Positive COVID Tests in the school holidays**

Between 18-23 December, if your child has a positive Covid 19 test, and having developed symptoms within 48 hours of being in school, please contact Mr Cook via Dojo as a matter of urgency. This is so that the school can assist with contact tracing and advising self-isolation where necessary.

After the 23 December the school should not be contacted, parents should follow contact tracing instructions provided by NHS Test and Trace.

### A Message from Ms Adams (SENCO)

If you are having a pre-Christmas clear out of toys, please consider if you have anything you could donate to the school.

Anything would be welcome including preschool toys, construction (lego, mobile etc.), small world (happyland, playmobil, animals etc.), card games, board games, wooden toys, sensory toys....for ages 2/3 and upwards.

In these times of Covid and bubbles and being unable to share resources as we usually would, we would love to be able to share more around the classes where needed for those less structured times.

We will need to quarantine any donations, so please bring them to the main office during the week before or the week after the Christmas holidays, in a bag or box clearly labelled for Ms Adams.

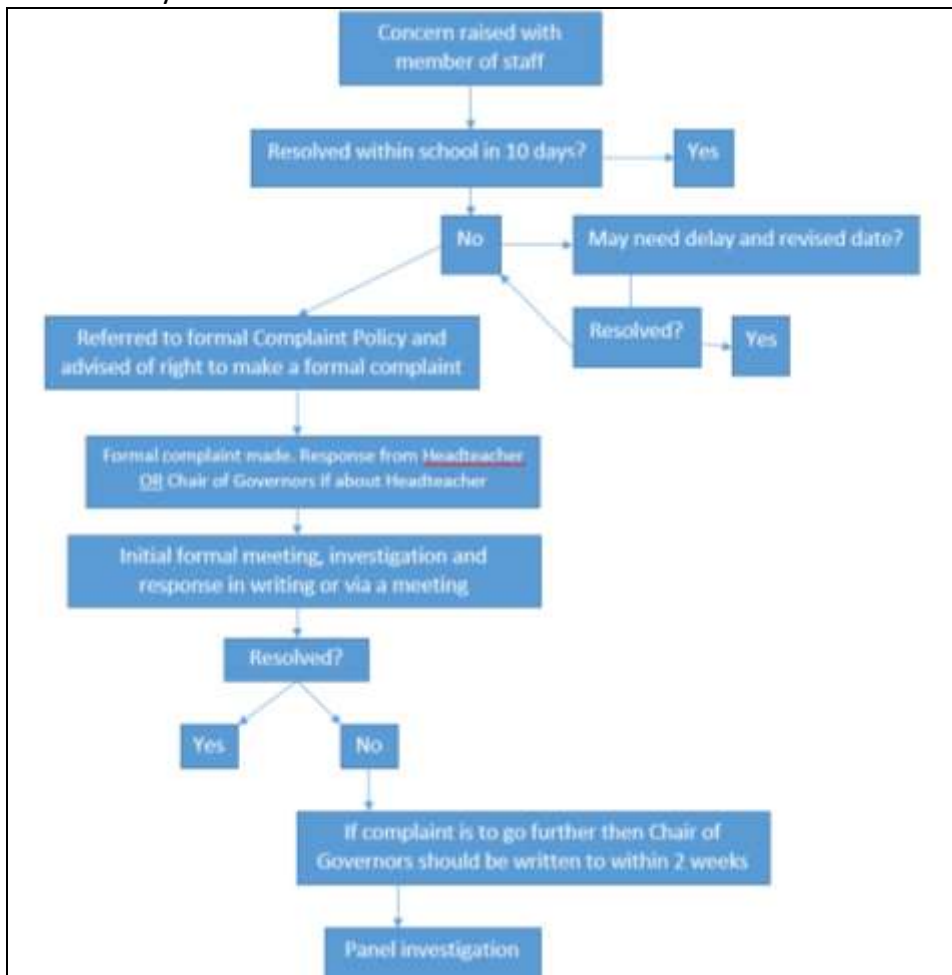
Many thanks

### Pantomime, Snacks and Presents

A big 'Thank You' to the PTA for providing the link to an online pantomime this year for children and for the snacks to enjoy during the interval and for 'liaising' with Santa to deliver an early Christmas present to the children. One Y4 child heard to say "That was the best afternoon in school, EVER!"

### Complaints Procedure Flow Chart

The governors asked Mr Marriott to provide a flowchart to make the process as clear as possible for how, as a federation, we handle concerns and complaints. Most can be easily resolved informally face to face, by email or by phone. Occasionally there may be a need to escalate the complaint so that it can be investigated satisfactorily and this may involve our governors, but only at a later stage. The LSP policy on complaints is available on our website but we hope this flowchart explains the initial process more clearly.



## Children in Need

Thank you for everyone who donated money to the Children in Need appeal. We raised a total of £211.12.

Term Dates for the Academic Year	2020/21
Inset Day	Tuesday 1/09/2020
Term 1	Wednesday 2/9/2020 – Friday 23/10/ 2020
Half Term Holiday	Monday 26/10/2020 – Friday 30/10/2020
Inset Day	Monday 2/11/2020
Term 2	Tuesday 3/11/2020 – Thursday 17/12/2020 <b>NOTE: Friday 18/12/2020 is an INSET day</b>
Christmas Holiday	Monday 21/12/2020 – Friday 1/1/2021
Inset Day	Monday 4/1/2021
Term 3	Tuesday 5/1/2021 – Thursday 11/2/2021
Inset Day	Friday 12/2/2021
Half Term Holiday	Monday 15/2/2021 – Friday 19/2/2021
Inset Day	Monday 22/2/2021
Inset Day	Monday 8 <sup>th</sup> March 2021
Term 4	Tuesday 23/2/2021 – Thursday 1/4/2021
Easter Holiday	Friday 2/4/2021 – Friday 16/4/2021
Term 5	Monday 19/4/2021 – Friday 28/5/2021
Half Term Holiday	Monday 31/5/2021 – Friday 4/6/2021
Term 6	Monday 7/6/2021 – Wednesday 21/7/2021

DEADLINE FOR NEXT NEWSLETTER 5<sup>th</sup> January 2021

The newsletter is also available on our website <http://bishopsuttonstantondrew.co.uk>