



# Stanton Drew Newsletter

Wednesday 15<sup>th</sup> September 2021



18<sup>th</sup> Sept - Kaison  
22<sup>nd</sup> Sept - Jack-Finley



Please keep sending in your used stamps for recycling. There is a box in the school entrance.



A big Stanton Drew welcome to all our new pupils

Reception - Olivia, Molly, Elodie, Blue, Jude, Kaison, Saraya, Marcie, Samuel, Nicola, Mollie, Teddie and Aurelia

Year 1 - Molly

Year 2 - Atia and Abel

Year 4 - Zaidan

Year 5 - Hannah

Year 6 - Thomas

and our new teacher, Miss Everson in Chinchillas

## After School Activities

We would like to confirm the after-school activities for the school that we are able to offer for T1 and T2. We would like to offer these at no cost to parents in T1 and T2 again this Autumn Term due to Sports Funding allocation. Please note however, we may need to limit numbers dependent on the applications. I do hope that this is something that may be of interest to some of our children - after lockdown it should be a great opportunity for the children to have additional fun time in school with their friends, as well as being active and enjoying playing sports.

	Monday	Tuesday	Wednesday	Thursday	Friday
Activity	Multi Skills	Robotics	Multi Sports	Football	Basketball
	ActivEd	Mr Schofield	Akeel Yousaf	Raph Burke	Akeel Yousaf
Time	1515-1615	1515-1630	1515-1615	1515-1630	1515-1615
Cost	No cost	No cost	No cost	No cost	No cost
Booking	Form	Mr Schofield	Form	Form	Form
Open to	Years 3-6	Selected KS2	Years 1 & 2	Years 3-6	Years 3-6
Starting	20 <sup>th</sup> September	21 <sup>st</sup> September	22 <sup>nd</sup> September	23 <sup>rd</sup> September	24 <sup>th</sup> September

## Tennis

Year 6 will be attending tennis coaching at Bishop Sutton Tennis Club every Friday afternoon for terms 1 and 2. Please can you make sure the children come into school in their full PE kit and a waterproof coat just in case of showers. The club will provide tennis rackets. Thank you to the Friends for kindly covering the cost of this coaching.

## School Photographs

Tempest will be coming into school on Wednesday 6<sup>th</sup> October to take individual, year, class and leavers photographs. They do only come once a year so this is your opportunity to purchase a moment in time.

## Communication/Letters Home

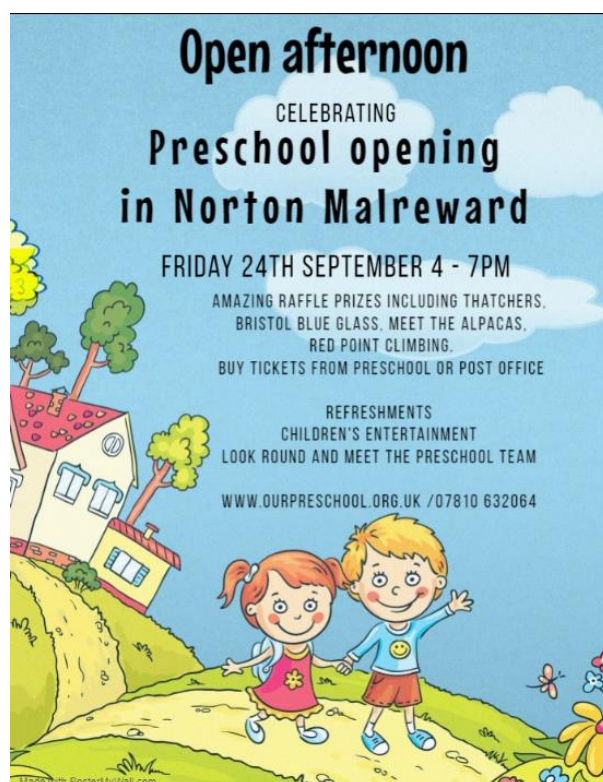
We will be continuing to communicate as much as possible via email between school and home so please check your email inboxes regularly for any letters or Newsletters. Paper copies of any letters requiring permissions or written

replies will be sent to avoid the need for you to print anything off at home. If you would prefer to receive paper copies please would you let us know in the office. We will continue to use Groupcall to text you any last minute messages or reminders e.g. cancelled clubs, so please also make sure that we have your correct mobile telephone number.

### Diary Dates

2021-2022	
Term 1	2 <sup>nd</sup> September 2021 – 22 <sup>nd</sup> October 2021
Half Term	25 <sup>th</sup> October 2021 – 29 <sup>th</sup> October 2021
Term 2	1 <sup>st</sup> November 2021 – 17 <sup>th</sup> December 2021
Christmas Break	20 <sup>th</sup> December 2021 – 3 <sup>rd</sup> January 2022
Term 3	4 <sup>th</sup> January 2022 – 18 <sup>th</sup> February 2022
Half Term	21 <sup>st</sup> February 2022 – 25 <sup>th</sup> February 2022
Term 4	28 <sup>th</sup> February 2022 – 8 <sup>th</sup> April 2022
Easter Break	11 <sup>th</sup> April 2022 – 22 <sup>nd</sup> April
Term 5	25 <sup>th</sup> April 2022 – 27 <sup>th</sup> May 2022
Half Term	30 <sup>th</sup> May 2022 – 3 <sup>rd</sup> June 2022
Term 6	6 <sup>th</sup> June 2022 – 22 <sup>nd</sup> July 2022
INSETS	Thursday 2 <sup>nd</sup> Sept, Friday 3 <sup>rd</sup> Sept, Monday 1 <sup>st</sup> Nov, Tuesday 4 <sup>th</sup> Jan and Friday 27 <sup>th</sup> May

Website: <https://www.bishopsuttonstantondrew.co.uk>  
 Email: [sdps@bishopsuttonstantondrew.co.uk](mailto:sdps@bishopsuttonstantondrew.co.uk)  
 Twitter: @BSSDFederation



## Friends update for School Newsletter – 7<sup>th</sup> September 2021

### Welcome to new parents/carers

Hello to the new parents/carers that have joined the school in September!

We are the Friends of Stanton Drew Primary School and we help to fundraise for the school so that the children can enjoy new resources, play equipment, school trips, theatre experiences etc.

The Friends are:

- Deb Davis (Chair)
- Emma Snary (Treasurer)
- Catherine Marsh (Secretary)
- Sally Davis
- Matthew Elliott
- Anna Fairhurst
- Andy Strickland
- Rob Wootton

### New members

We are always looking for parents and carers to join the Friends and help to raise vital funds for the school. We are a friendly bunch and always welcome anyone who would like to join. Our next meeting will be the AGM meeting on Tuesday 5<sup>th</sup> October at 7.30pm (more details to follow). **At the meeting we will be looking for volunteers to take on the Secretary role and Treasurer role.** We can do a full handover for both of these roles so you won't be left on your own, plus all of the Friends will help out too. If you are interested in finding out more then please email Catherine at [stantondrewfriends@gmail.com](mailto:stantondrewfriends@gmail.com)

### Pre-loved school uniform sale – Saturday 11<sup>th</sup> September

Thanks to everyone who came and supported us at the car boot sale on Saturday 11<sup>th</sup> September at the village hall. **If you missed out on the sale then we'll be holding another pre-loved uniform sale after school in the playground on Friday 17<sup>th</sup> September.** There is no set price for the uniform we just ask for a donation. Come along and grab a bargain!

### School Lottery

If you haven't signed up already then please go online, sign up to the lottery and purchase your lottery tickets! Please ask friends, family, neighbours and work colleagues to sign up.

Go to: <https://www.yourschoollottery.co.uk/lottery/school/stanton-drew-primary-school>

Tickets for the lottery cost just £1 per week. There is a guaranteed cash winner for the school every week and the chance to win the £25,000 jackpot. There is no commitment to stay in the lottery and players can choose to leave at any time.

The draw takes place every Saturday, winners will be notified via email. Match all 6 numbers and you win the JACKPOT! There is also a winner picked at random to win the weekly raffle prize, which means there is a guaranteed winner for the school every week, so far winners have won between £8 and £20. The more people that buy tickets, the bigger the raffle prize winnings pot. All winnings will be paid directly into your bank account.

If you already have an account then please check to see that you have purchased tickets for future draws, we would hate for anyone to miss out. 😊

## **Reminders**

- Keep up to date with events and updates by following the **Stanton Drew Primary School Parents & Carers** page and **Stanton Drew Primary School Friend Association** page on Facebook.
- **Easy Fundraising** – please sign up to <https://www.easyfundraising.org.uk/> to get a free donation for the school every time you shop online.
- **Ways to donate**

There is a way for everyone to donate! We are asking parents/carers/grandparents and any family members that would like to help the school to either:

- **Transfer to Friends of Stanton Drew School (PTA)**

Sort code: 40-17-49

Account number: 41043668

Please use your child's name as the online reference

- **Cheques made payable to: Friends of Stanton Drew School (PTA)**

Please write your child's name on the back of the cheque. Place in an envelope, addressed to Friends of Stanton Drew School and hand into the school (either to your child's teacher or to Mrs Clubbe)

- **Cash**

Place in an envelope, addressed to Friends of Stanton Drew School and hand into the school (either to your child's teacher or to Mrs Clubbe)

Thank you

The Friends



## Bulb planting with Stanton Drew Primary School

I have received amazing comments on the bulbs planted last year along The Causeway and opposite Stanton Drew Primary School.

I am being asked what we will be doing this year now!!! 😊

The plan is more daffodils, snowdrops and maybe cowslips opposite the school, and snowdrops. "The Causeway" if allowable also.

Obviously to be able to do this I need donations which was what made this happen last year 🙌

If you would like to donate any amount, please contact me by text or phone 07855272542.

Obviously, I need to pre order and plan with the school so would be grateful if you could contact me as soon as possible.

Thank you so much.

Shirley (Mrs Womble)😊

### Benefit Related Free School Meals

#### All School Years

If you receive any of the benefits listed below, and your child attends an LA maintained school or Academy in Bath and North East Somerset, please register for benefit related free school meals.

Registrations could attract Pupil Premium funding for your child's school, £1,345 per Primary pupil and £955 per Secondary pupil.

- Universal Credit (provided you have an annual net earned income of no more than £7,400, as assessed by earnings from up to three of your most recent assessment periods)
- Income Support
- Income-Based Jobseekers Allowance
- Income Related Employment Support Allowance
- Child Tax Credit (WITHOUT Working Tax Credit) and have an annual household income (as assessed by HMRC) below £16,190
- Working Tax Credit **Run-on** which is **only paid for 4 weeks** after you STOP qualifying for Working Tax Credit
- The Guaranteed Element of State Pension Credit
- Support under PartV1 of the Immigration and Asylum Act 1999

Apply online at <https://beta.bathnes.gov.uk/apply-free-school-meals>

Email the team at [freeschoolmeals@bathnes.gov.uk](mailto:freeschoolmeals@bathnes.gov.uk)

or call 01225 394317 – please leave a message if you reach our answerphone.