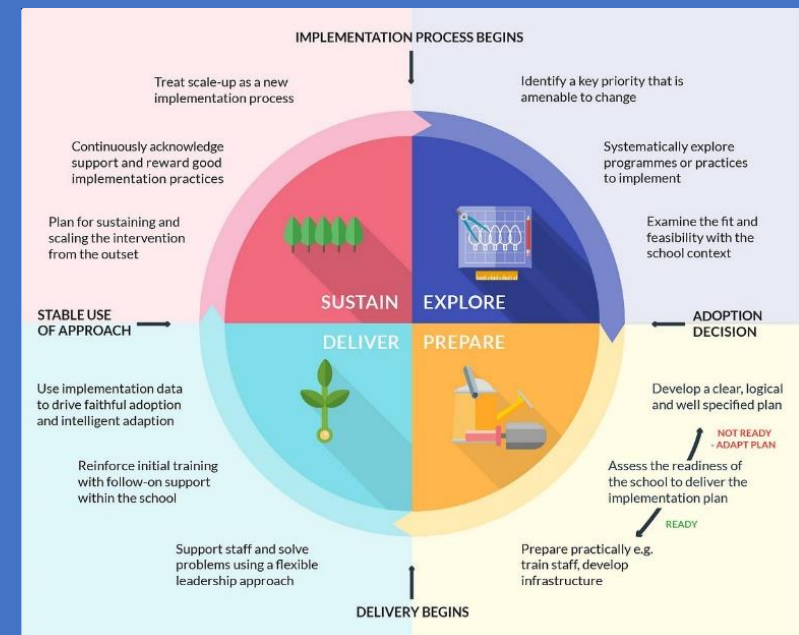




LIGHTHOUSE
SCHOOLS PARTNERSHIP

Federation of Bishop Sutton & Stanton Drew Primary Schools

School Development Plan Summary September 2023 – July 2024



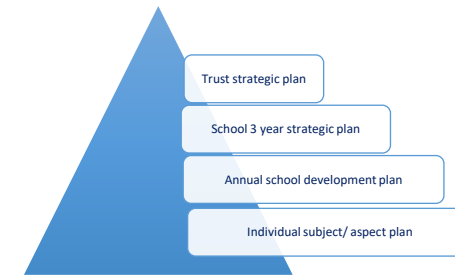
At LSP our school improvement model is based on the understanding that effective implementation is a process, not an event which needs planning and executing in stages.

Headteachers are the School Improvement Lead for their school, strategically leading and managing their leadership team with support and challenge from the Trust.

We use the [EEF guide to implementation](#) including the language of ‘explore, prepare, deliver, sustain’ to support leaders at all layers of the organisation to implement change and evolve/ further develop practice effectively.

This plan is to be read in conjunction with, and in the light of:

- the school’s strategic plan
- self-evaluation summary
- previous inspection outcomes
- advice from SIP visits
- pupil outcomes



The plan outlines the *strategic* view of planned implementation activities, training and monitoring to address the next stage in the school improvement journey. Monitoring of actions and evaluation of impact will take place each long term (3 x per year) with the plan rag-rated accordingly. Progress towards anticipated outcomes will be reported to the Local Governing Body in each of their meetings either as part of the written Headteacher’s report (3 x per year) or verbal report to Governors on the alternative terms.



School Development Plan Focus Areas 23/24 - Summary



Implementing Rosenshine's Principles of Instruction at BSSD across the curriculum



Embedding the agreed approach to writing across the Federation



Implementing the new approach to the teaching of Science and PE



Embedding Universal Provision in all classes

