

LIGHTHOUSE  
SCHOOLS PARTNERSHIP

Federation of Bishop Sutton and  
Stanton Drew Primary Schools

# School Development Plan

September 2024 – July 2025

At LSP our school improvement model is based on the understanding that effective implementation is a process, not an event which needs planning and executing in stages.

Headteachers are the School Improvement Lead for their school, strategically leading and managing their leadership team with support and challenge from the Trust.

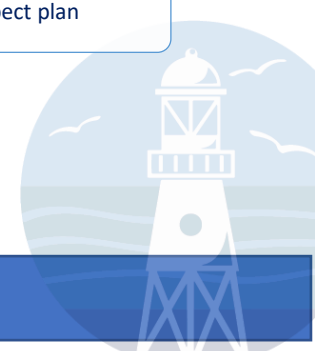
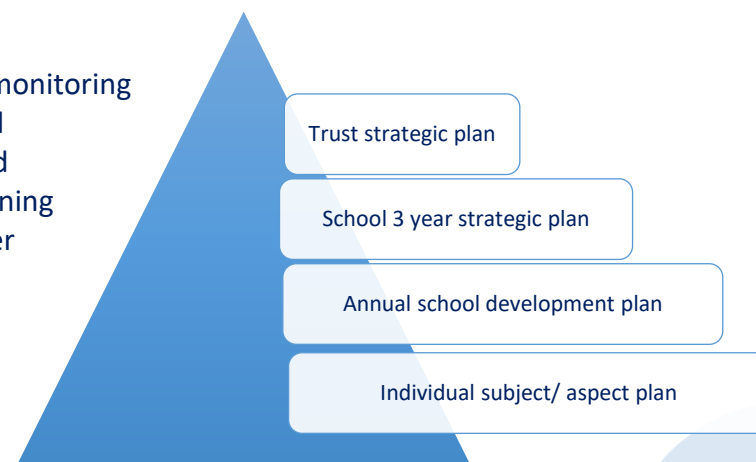
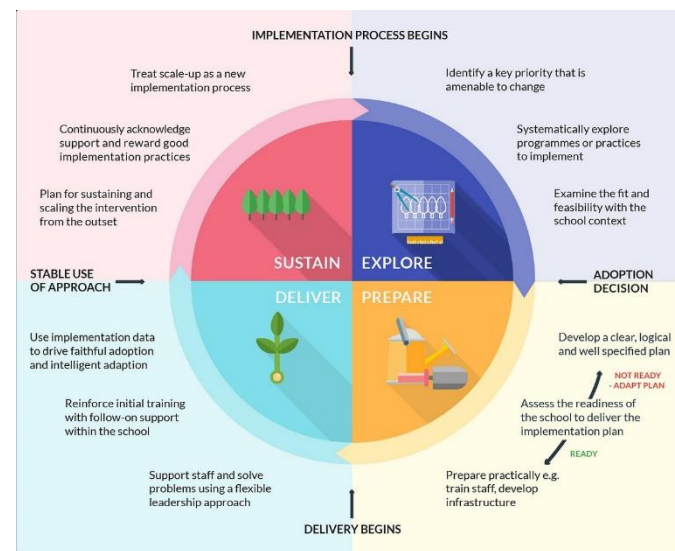
We use the [EEF guide to implementation](#) including the language of ‘explore, prepare, deliver, sustain’ to support leaders at all layers of the organisation to implement change and evolve/ further develop practice effectively.

This plan is to be read in conjunction with, and in the light of:

- the school’s strategic plan
- self-evaluation summary
- previous inspection outcomes
- advice from SIP visits
- pupil outcomes

The plan outlines the *strategic* view of planned implementation activities, training and monitoring to address the next stage in the school improvement journey. Monitoring of actions and evaluation of impact will take place each long term (3 x per year) with the plan rag-rated accordingly. Progress towards anticipated outcomes will be reported to the Local Governing Body in each of their meetings either as part of the written Headteacher’s report (3 x per year) or verbal report to Governors on the alternative terms.

**Where appropriate** individual subject/ aspect plans will sit underneath the SDP with more detailed planning.



## School Development 2024-2025 key focus areas



**Leadership and management: develop and successfully embed new leadership and teaching teams across the federation**



**Teaching and learning: launch, embed and sustain consistently excellent teaching and monitoring of phonics across the federation, in line with ULS approach.**



**Wider curriculum: review, develop and embed consistent pedagogical approaches across the federation**

